

Combination Fire/Smoke Damper • 1½ Hr. Rated • Airfoil Blade • Leakage Class I • 250°F or 350°F Rated • Out-of-Barrier • Galvanized Steel

Standard Construction and Materials

- FRAME:** 5½" x 7⁄8" x 16 GA. galvanized steel hat channel.
BLADES: 20 GA. double-skinned, equal to 14 GA., parallel action.
AXLES: Square, plated solid steel stub.
BEARINGS: Oil impregnated bronze.
LINKAGE: Plated steel angle and crank plates with stainless steel pivots, in-jamb type.
STOPS: 20 GA. galvanized steel at head and sill.
BLADE SEALS: Silicone.
JAMB SEALS: Stainless steel.
SLEEVE: 20 GA. galvanized steel by 15" long (1½" grille clearance) or 17" long (3½" grill clearance) with 13⁄16" front flange.
INSULATION: Factory installed 0.2" thick intumescent insulation on top and both sides (vertical mount) or all four sides (horizontal mount).
CAULKING: Hardcast Irongrip 601 or UL-listed equivalent.
ACTUATOR: Electric with heat response device (EHRD) or pneumatic with heat response device (PHRD), factory-installed for Power-Open/Spring-Close (fail close) operation, internally mounted and accessible from grille side, or mounted internally or externally for continuous duct applications.
FINISH: Mill.

Options

Integral Dual Position Indication (IDPI) Switches
 Sensotherm Re-Openable Heat Response Device (ESOT) for electric actuator
 Sensotherm Re-Openable Heat Response Device (ESOP) for pneumatic actuator
 Model SM-501 Flow-Rated Smoke Detector
 - Shipped Loose
 Model 2D51 No-flow smoke detector (14" Minimum Damper Height)
 Tab-Lock retaining angles
 Stainless steel bearings
 Copper tubing (for Pneumatic Actuators)
 Sleeves of various gauge thicknesses
 Round or oval transitions
 Short-width (less than 10") and/or short-height (less than 8") transitions

Notes

1. Damper frames are provided approximately ¼" undersized. The addition of a sleeve and insulation will increase the size of the assembly. See SI-FAGM or SI-FACD for sizing openings.
2. Dampers smaller than minimum frame size require a transition. Refer to SD-TRFS. When transitioned on one-side only (which will be a damper supplied with a transition on the non-jackshafted side only), the grille size should be selected to match the damper frame size, not the transition collar size.
3. Damper with smoke detector must have a minimum sleeve of 16" (1½" setback) or 18" (3" setback).
4. Dampers for horizontal installation can only be mounted in a fire barrier constructed of masonry/concrete materials.

Damper Sizes

		2000 fpm, 4 in.wg	4000 fpm, 6 in. w.g.
Orientation	Hor & Vert	Hor & Vert	Hor & Vert
Panel	Min Panel	Max Panel	Max Panel
Rectangular	10"W x 8"H (10"W x 8"H frame)	32"W x 42"H	24"W x 20"H
Round	6" dia. (10"W x 8"H frame)	30" dia.	18" dia.
Oval	8"W x 6"H (10"W x 8"H frame)	30"W x 40"H	22"W x 18"H

UNDERWRITERS LABORATORIES INC.®

CLASSIFIED DYNAMIC FIRE AND SMOKE DAMPER
 FIRE RESISTANCE RATING 1½ HR
 LEAKAGE RESISTANCE CLASS I

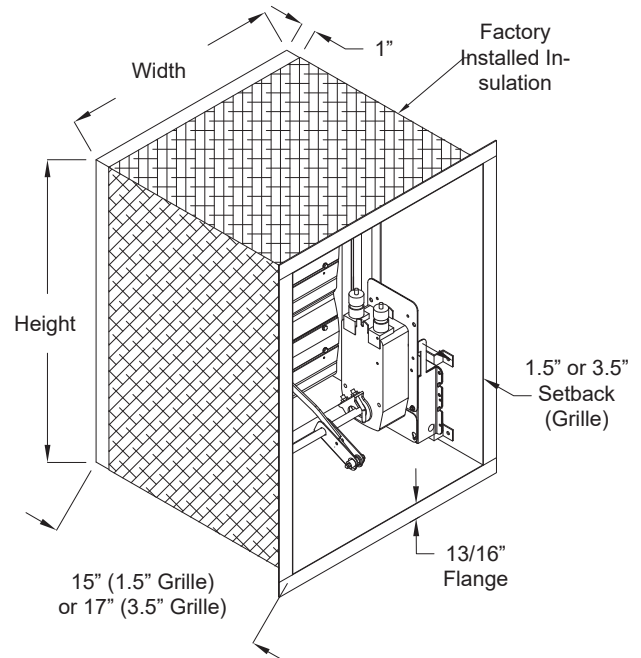


FILE # R6462



This combination fire/smoke damper meets the construction and performance requirements of:

- Underwriters Laboratories Inc. Standards 555 and 555S
- National Fire Protection Association Standards 80, 90A, 92, 101, 105
- ICC's International Building Code
- New York City MEA Listing #111-99-M
- California State Fire Marshal Listing #3225-1328:118
- Underwriters Laboratories Inc. Approved for dual direction airflow and dynamic conditions.
- Underwriters Laboratories Inc. Classified for use in fire resistive ratings of less than 3 hours.
- Underwriters Laboratories Inc. Classified for use in smoke control systems for Leakage Class I and 250°F or 350°F.
- Actuators must be arranged to operate automatically, must fail closed upon loss of power, and must be controlled by a smoke detection system.



For handwritten orders, use the schedule block on page 2.

In the interest of product development, CESCO Products reserves the right to make changes without notice.



450 Riverside Dr • Wyalusing PA, 18853
 Phone: 570-746-1888 • Fax: 570-746-9286
 www.cescoproducts.com

Combination Fire/Smoke Damper • 1½ Hr. Rated • Airfoil Blade • Leakage Class I • 250°F or 350°F Rated • Out-of-Barrier • Galvanized Steel

Operational Rating

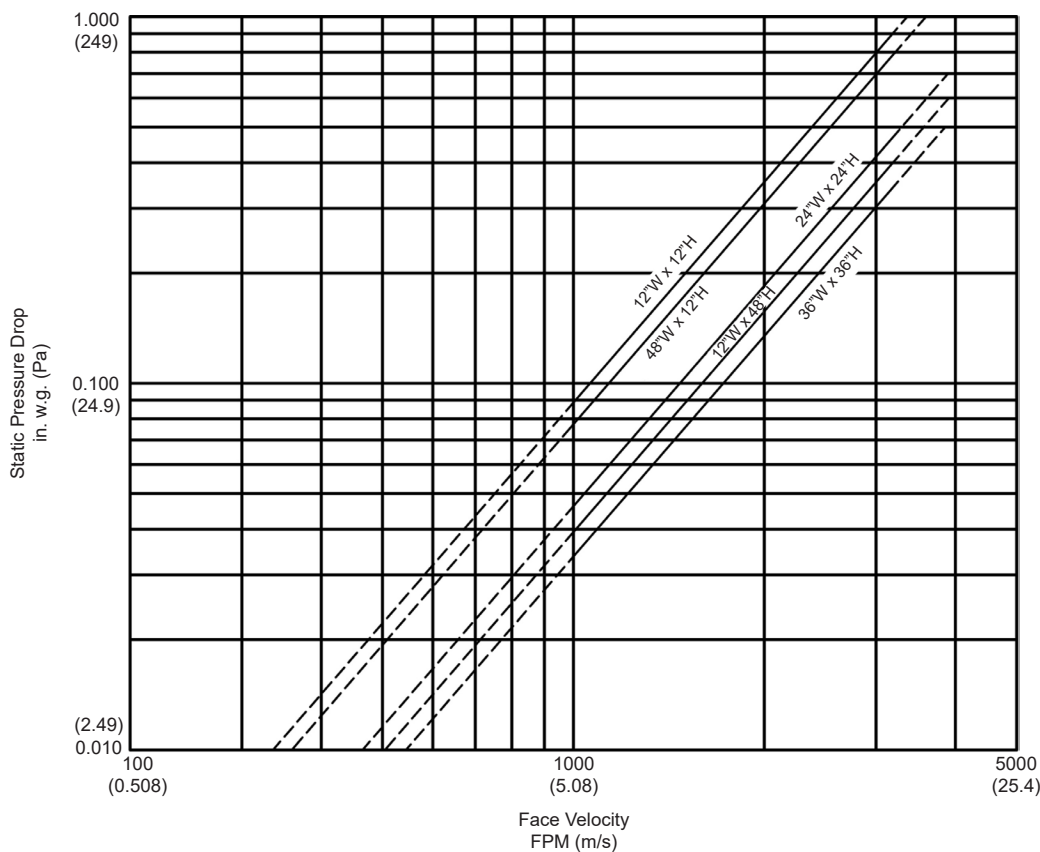
Maximum Differential Pressure: 6 in. wg
Maximum Velocity: 4000 fpm

Leakage Rating

UL Leakage Class I
8 cfm per sq. ft. maximum @ 4 in. wg

Pressure Drop

The Pressure drop data shown below is based on laboratory conditions. The test setup does not take into account elbows or other duct fittings that are part of every actual duct system. The configuration of the actual duct system immediately upstream and downstream of the damper often contributes more pressure loss than the damper itself.




This product was tested
in accordance with AMCA
Standard 511.

Intake air converted to
standard air density.

Sizes listed on this chart exceed
the size limitations of the CA1G.
These sizes are based on the
model CA1 data.

AMCA Figure 5.3

										
Item #	Qty	Damper Size	Horizontal	Vertical	250°F	350°F	Velocity	Pressure		
			Orientation		Temp. Rating		Operational Rating		Union Made	
Arch. / Eng.:					EDR:		ECN:		Job:	
Contractor:										
Project:					Date:		DWN:		DWG:	

Combination Fire/Smoke Damper • 1½ Hr. Rated • Airfoil Blade • Leakage Class I • 250°F or 350°F Rated • Out-of-Barrier • Galvanized Steel

Installation Configurations

<u>CA</u>	<u>1</u>	<u>G</u>	<u>2</u>
I	II	III	IV

I. Base Model

CA = Airfoil Blade Fire-Smoke Damper
 CG = Single-Thickness Blade Fire-Smoke Damper
 15MA = Airfoil Blade Dynamic Multi-Blade Fire Damper
 15MD = Single Thickness Blade Dynamic Multi-Blade Fire Damper
 15MS = Single Thickness Blade Static Multi-Blade Fire Damper

II. Leakage Class (Fire-Smoke Dampers Only)

1 = UL Class-I Leakage
 2 = UL Class-II Leakage
 Blank = Leakage Class Not Applicable (Fire Dampers)

III. Installation Configuration

D = Out-of-barrier Horizontal Grille Application, 3½" Grille Clearance
 E = Out-of-barrier Horizontal Grille Application, 1½" Grille Clearance
 F = Out-of-barrier Vertical Grille Application, 3½" Grille Clearance
 G = Out-of-barrier Vertical Grille Application, 1½" Grille Clearance
 J = Out-of-barrier Horizontal, Continuous Duct
 K = Out-of-barrier Vertical, Continuous Duct

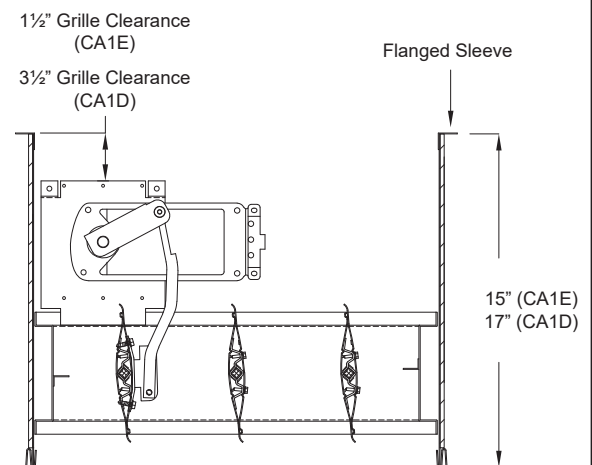
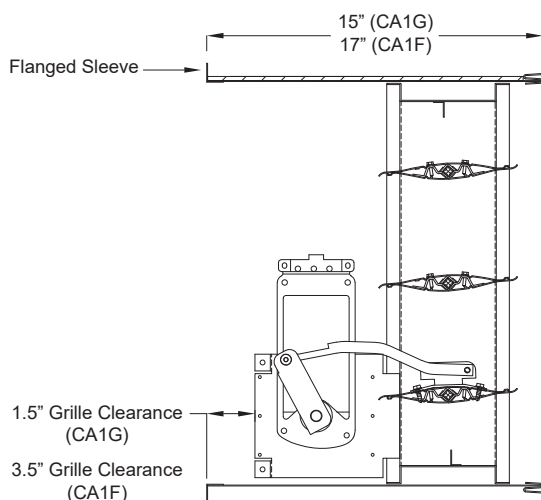
IV. Temperature Rating (Fire-Smoke Dampers Only)

2 = 250°F
 3 = 350°F
 Blank = Temperature Rating Not Applicable (Fire Dampers)

NOTE

- All Installations must be in accordance with SI-FAGM or SI-FACD
- Horizontal installations are only approved for masonry/concrete.

Grille Access Applications



Combination Fire/Smoke Damper • 1½ Hr. Rated • Airfoil Blade • Leakage Class I • 250°F or 350°F Rated • Out-of-Barrier • Galvanized Steel

NOTE

- All Installations must be in accordance with SI-FAGM or SI-FACD.
- Horizontal installations are only approved for masonry/concrete.

Continuous Duct Applications